

# Montauk Sun Rates and Space Availability for 2017

	<b>SOLD</b> Inside Front/Cover	<b>SOLD</b> Inside Back/Cover	<b>SOLD</b> Back Cover	Glossy Spread Centerfold	Glossy Outside Centerfold	Full Page uncoated
	<b>The Covers will be Glossy all Year</b>					
March	\$ 1,600	\$ 1,600	\$ 1,800			\$ 900
April	\$ 1,600	\$ 1,600	\$ 1,800			\$ 900
May	\$ 1,600	\$ 1,600	\$ 1,800			\$ 1,100
June	\$ 1,600	\$ 1,600	\$ 1,800	\$ 3,200	1500 p.p.	\$ 1,100
July	\$ 1,600	\$ 1,600	\$ 1,800	\$ 3,200	1500 p.p.	\$ 1,100
August	\$ 1,600	\$ 1,600	\$ 1,800	\$ 3,200	1500 p.p.	\$ 1,100
September	\$ 1,600	\$ 1,600	\$ 1,800	\$ 3,200	1500 p.p.	\$ 1,100
October	\$ 1,600	\$ 1,600	\$ 1,800			\$ 900
November	\$ 1,600	\$ 1,600	\$ 1,800			\$ 900
December	\$ 1,600	\$ 1,600	\$ 1,800			\$ 900
Jan & Feb.	\$ 1,600	\$ 1,600	\$ 1,800			\$ 900
Web Site	\$ 300	\$ 300	\$ 300			\$ 300
<b>Total</b>	<b>\$17,900</b>	<b>\$17,900</b>	<b>\$20,100</b>			<b>\$11,200</b>

**No Charge for Real Rstate listings, Listings are posted on the Sun website (over 1500 hit a day in season and over 500,000 hits just between March to May because of the Music Festival.) The Sun is in Manhattan on the Jitney, at the Montauk Train station and the only publication at the Lighthouse.**

Eighth:  
4-3/4 x 3-3/8  
3-3/8 x 4-3/4

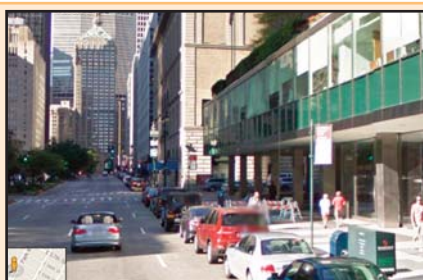
Quarter:  
4-3/4 x 6-5/8  
6-5/8 x 4-3/4

Half:  
9-3/4 x 6-5/8  
6-5/8 x 9-3/4  
4-3/4 x 13-1/2

Full:  
10-7/8 x 14-1/2 Trim  
9-7/8 x 13-1/2 Safe Area  
11-3/8 x 15 Bleed

Ad Size	Singel Issue	May - Sept	11 issues
Full Page	\$1,200	\$1,100	\$1100/\$900
Half Page	\$700	\$600	\$500
Quarter	\$450	\$400	\$350
Eighth	\$300	\$275	\$250

The screenshot shows the Montauk Sun website's home page. It features a navigation bar with links for 'Home Page', 'Latest News', 'Life & Arts', 'Real Estate', 'Phone Book', 'Submit', and 'Fishing'. The main content area includes several articles: 'Surfing with Debra Rose', 'Salbox Restaurant and Bar', 'Muse @ the End', 'Memorial Still Stands the Test', '5-Days Forecast' (71°), 'Montauk Festival', 'Traveling to Montauk?', 'Sushi with a view at Gosman's Inlet Cafe', and '8th Annual The Montauk Music Festival' (May 18th - 21st 2017). A real estate listing for 'HAMPTONS REAL ESTATE' by Chris Coleman is also visible.



**We have 90 street box locations in Manhattan and growing!  
15 locations in EAST NORWICH  
15 locations in Williamsburg Brooklyn**

**to further reach your potential clients.**

**Kenny Giustino**  
Montauk Sun  
631-668-5077  
mtkken@gmail.com  
MontaukSun.com

**Montauk Sun**  
You can see the current full issue on the  
Turn the page link below  
www.montauksun.com/MontaukPageFlip

## Montauk Sun 2017 Schedule

ISSUE	ART DUE	COATED COVER ART DUE	DISTRIBUTION DATE
Winter 2017	January 6, 2017	12/30/2016	January 10, 2017
March 1, 2017	February 3, 2017	2/24/2017	March 7, 2017
April 1, 2017	March 31, 2017	3/24/17	April 4, 2017
May 1, 2017	April 28, 2017	4/21/2017	May 2, 2017
June 1, 2017	May 17, 2017	5/12/2017	May 23, 2017
July 1, 2017	June 23, 2017	6/16/2017	June 27, 2017
August 1, 2017	July 28, 2017	7/21/17	August 1, 2017
September 1, 2017	August 25, 2017	8/18/2017	August 29, 2017
October 1, 2017	September 22, 2017	9/15/2017	September 26, 2017
November 1, 2017	October 27, 2017	10/20/2017	December 31, 2017
December 1, 2017	November 22 (Day before Thanksgiving)	11/17/2017	November 28, 2017
Winter 2018	January 8, 2018	12/30/2017	January 12, 2018

When you're not in Montauk Where you can find the *Montauk Sun*

**9 New locations in Manhattan!**

**10 locations in Western LI., 25 locations in the Hamptons & North Fork, 10 locations in Williamsburg Brooklyn!**

**Cityrux locations**

North East Fifth & 42nd st.  
 South East Park Av. & 40th  
 South West Park & 54th  
 South East Third & 42nd  
 South East 44 & Third  
 South West Second & 43rd.  
 NE Park/39  
 NE Lex/41  
 mid N 42/Lex-Third  
 SW 46/Lex  
 NE Park/53  
 mid N 50/Park-Lex  
 SW Third/40  
 SE Third/41  
 SW 42th & Lexington Ave  
 SE 44th & Lexington Ave  
 SW 50th & Park Ave  
 NW 52th & Lexington Ave  
 NW 40th & Third Ave  
 NW 41st & Third Ave  
 SW 42nd & Second Ave  
 NE Fifth Ave. & East 36th Street  
 NW Park Ave & East 40th  
 NE 46th & Park Ave  
 mid S 42nd between Second & Third  
 NW Third & 42nd  
 NE 39th & Madison Ave  
 NW 69 & Madison Ave.  
 SW 61 & Madison Ave.

NW67 & Madison Ave.  
 SE79 & Madison Ave.  
 SW80 & Madison Ave.  
 SE 74 & Madison Ave.  
 SW 80 & Madison Ave.  
 City Yellow Boxes  
 1ST AV @ 78TH / 79TH ST • SW  
 1ST AV @ 84TH / 85TH ST • SW  
 YORK AV @ 85TH ST • NW  
 YORK AV @ 80TH ST • NW  
 YORK AV @ 79TH ST • NW  
 YORK AV @ 71ST / 70TH ST • SW  
 YORK AV @ 69TH / 70 TH ST • NE  
 3RD AV @ 68TH / 69TH ST • SW  
 LEXINGTON AVE @ 68TH ST • NW

**NEW WESTERN Long Island STOPS:**

FAIRWAY SUPERMKT  
 50 MANETTO HILL RD PLAINVIEW  
 PORT JEFFERSON FERRY TERMINAL  
 102 W BWAY PT JEFFERSON  
 WILD BY NATURE SUPERMKT  
 369 N MAIN ST HUNTINGTON  
 WILD BY NATURE SUPERMKT  
 198 RT 25A EAST SETAUKET  
 Landmark Diner  
 1027 Northern Blvd, Roslyn, NY 11576

**OYSTER BAY:**

E NORWICH DELI  
 1004 OYSTER BAY RD

**EAST NORWICH:**

MESSINA MARKET  
 6255 NORTHERN BLVD  
 ROTHMANNS STEAK HOUSE  
 6319 NORTHERN BLVD  
 EAST NORWICH INN  
 6321 NORTHERN BLVD  
 BAGEL BOSS  
 1011 OYSTER BAY RD

**Williamsburg Brooklyn**

FABIANES CAFÉ & PASTRY  
 @142 N 5TH ST  
 VINNIE'S PIZZERIA  
 @148 BEDFORD AVE  
 EL BELT CAFÉ @ 158 BEDFORD AVE  
 BEDFORD GOURMET FOOD  
 @ 160 BEDFORD AVE  
 ANNA MARIA PIZZA PASTA  
 @ 179 BEDFORD AVE  
 BAGELSMITH @ 189 BEDFORD AVE  
 MIZU JAPANESE CUISINE  
 @ 192 BEDFORD AVE  
 NEW YORK MUFFINS  
 @ 198 BEDFORD AVE  
 NORTHSIDE GOUOMET DELI  
 @ 200 BEDFORD AV  
 WILLIAMSBURG CREAMERY  
 @ 201 BEDFORD AV



**NW 5th Ave & East 36th St.**



**Mid S 42 between 2nd & 3rd**



**East 46th & Park Ave**



**NW 41st & Third Ave**



**Mid S 42 between 2nd & 3rd**



**NW 40th & Third Ave**



**NE 39th & Madison Ave**



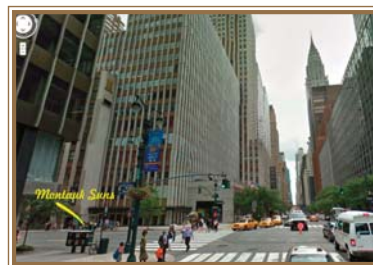
**Park Ave & East 40th st**



**SE 44th & Lexington Ave**



**Park Ave & East 54th st.**



**SW 42nd & Second Ave**



**SW 50th & Park Ave**